

Developing a Clean Air Action Plan for Patna

To develop an evidence-based Clean Air Action Plan for the city of Patna. The action plan defines a comprehensive set of policy measures and programmes that the state government and city administration will implement over an agreed-upon timeline to reduce ambient air-pollution levels.

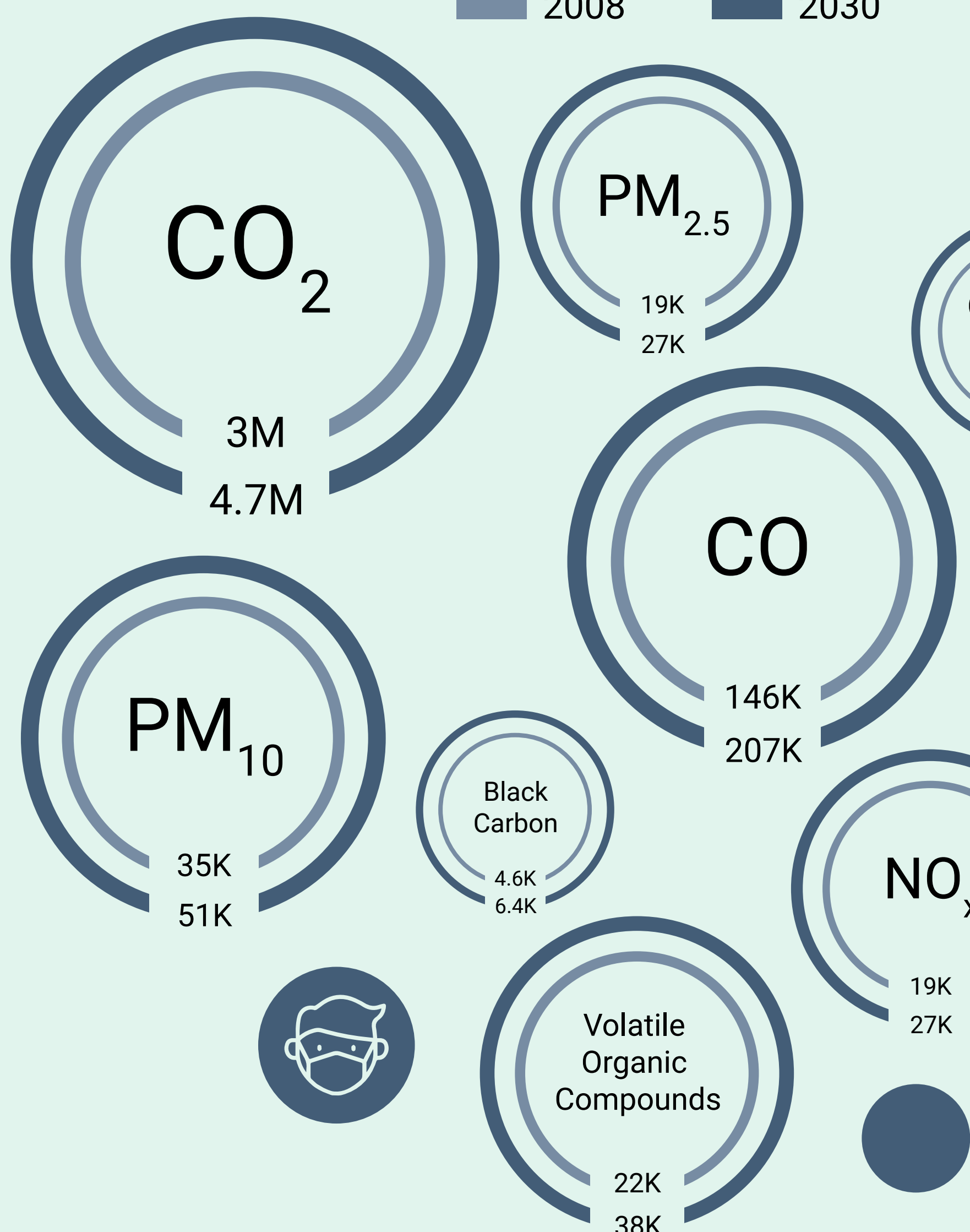


BIHAR

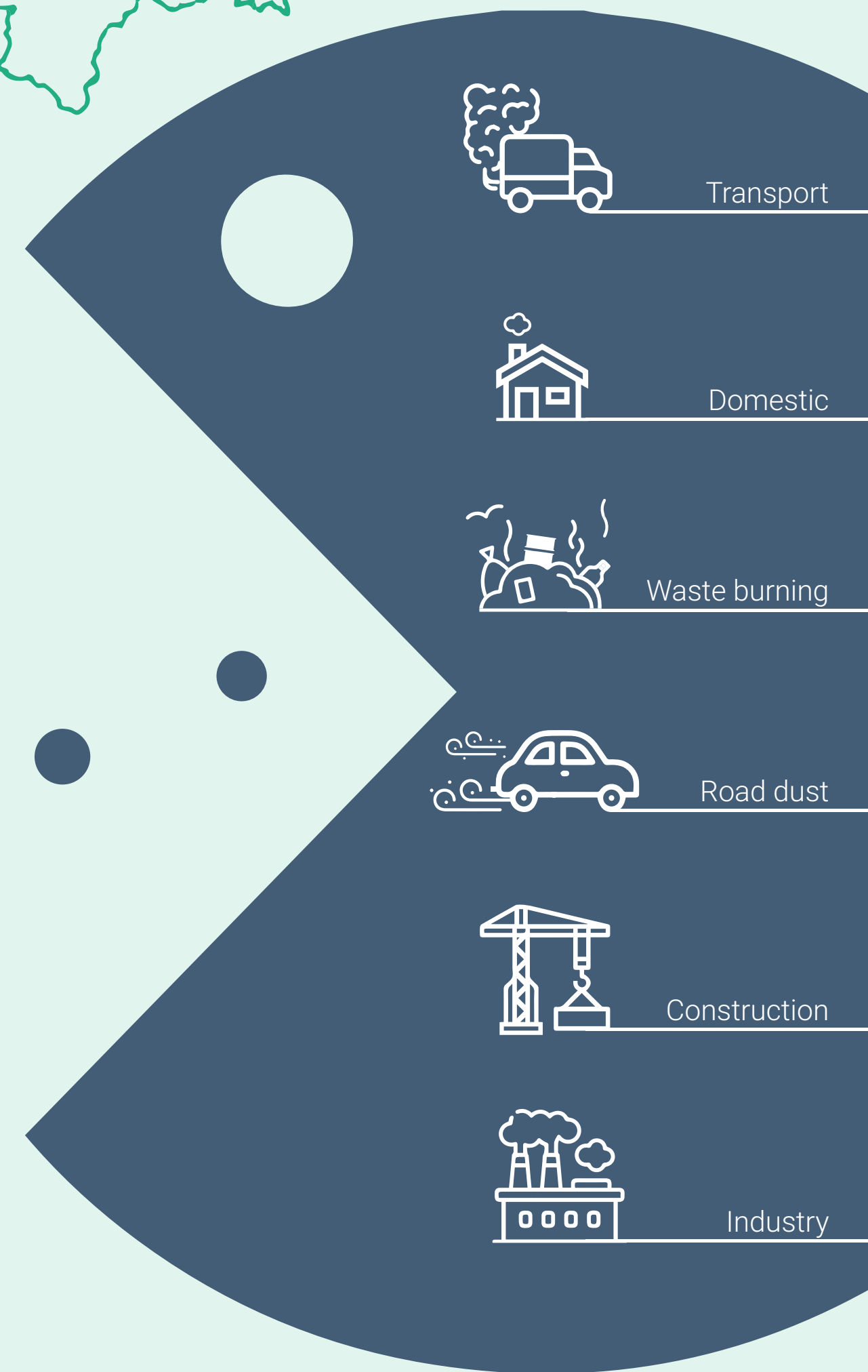
Patna

EMISSIONS ESTIMATED IN TONNES

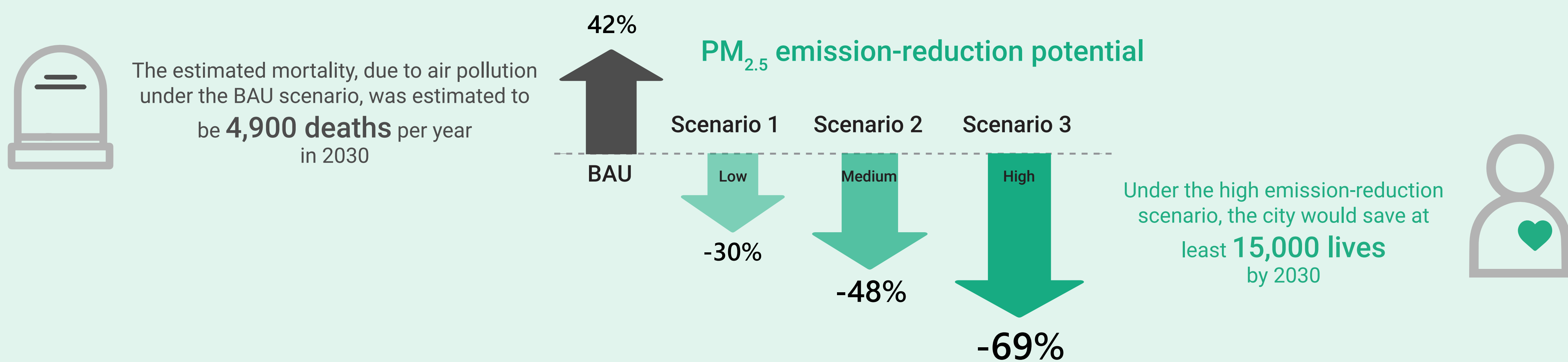
2008 2030



Sectors like transport, domestic fuel consumption, open garbage burning, road and construction dust, industries, DG sets, and aviation are contributing to the total pollution load in Patna. The contribution of these sectors varies –from 4% to 32%.



Three scenarios were created based on the Control Measures and their emission-reduction potential. The study was estimated under high, medium, and low emission-reduction scenarios.



CONTROL MEASURES (CMs) SUGGESTED FOR MAXIMUM POLLUTION REDUCTION

<p>Introduce EVs/CNG vehicles</p>	<p>Increase public transport</p>	<p>Implement efficient solid-waste management strategies</p>	<p>Decrease solid fuel & increase refuelling LPGs</p>	<p>Promote advanced eco-friendly technologies in industries</p>	<p>Enforce rules for construction & demolition waste management</p>
-----------------------------------	----------------------------------	--	---	---	---

Short-term CMs: implement immediately

Medium-term CMs: 3-year period

Long-term CMs: 5-year period